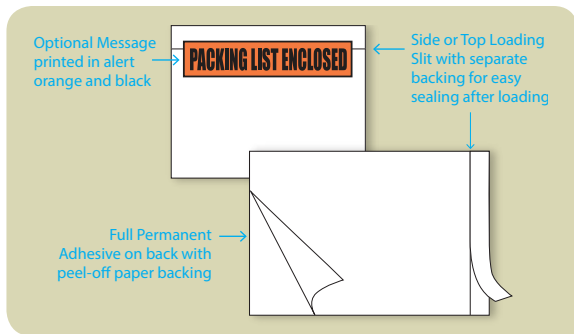




PACKING LIST ENVELOPES



These Packing List Envelopes are made of 2.0 mil polyethylene, the #1 requested strength for poly bags. These envelopes are tear resistant, to allow overstuffing and to protect important shipping documents from abrasion and weather. We offer eleven different configurations, including five sizes in clear face and six sizes printed with "Packing List Enclosed" or "Invoice Enclosed". The 10" x 12" envelopes are packed 500/case. All other envelopes packed 1000/case.

PRODUCT FEATURES

- ▶ 2.0 mil polyethylene
- ▶ Clear face for identification of enclosed documents
- ▶ Printed face with either "Packing List Enclosed" or "Invoice Enclosed"
- ▶ Peel and stick self-adhesive backing to hold pouch in place
- ▶ Slit opening on length or width of pouch, allowing user to slide paperwork inside and seal

PACKING LIST ENVELOPES

ITEM	W x L	DESCRIPTION	WT
CLEAR			
3868	4.5 X 6	Clear Face	8
3875	4.5 X 5.5	Clear Face	7
3877	10 X 12	Clear Face	16
3893	5.5 X 10	Clear Face	15
3895	7 X 5.5	Clear Face	11
3897	7 X 10	Clear Face	18
PRINTED			
3855	4.5 X 5.5	Packing List Enclosed	7
3860	4.5 X 5.5	Packing List Enclosed	7
3865	4.5 X 5.5	Invoice Enclosed	7
3873	4.5 X 6	Packing List Enclosed	8
3880	7 X 5.5	Packing List Enclosed	11
3883	5.5 X 10	Packing List Enclosed	15

